

Phoenix FD

Installation Guide

for version 1.0

online help index available at

<http://www.spot3d.com/phoenix/>

Copyright © 2010, Chaos Software Ltd. V-Ray and the V-Ray logo are registered trademarks of Chaos Software Ltd. in Bulgaria and/or other countries. Autodesk and 3ds Max are registered trademarks or trademarks of Autodesk, Inc., and/or its subsidiaries and/or affiliates in the USA and/or other countries. Microsoft, Windows, Windows Vista and Windows NT are either registered trademarks or trademarks of Microsoft Corporation in the United States and/or other countries. All other brand names, product names, or trademarks belong to their respective holders.

Table of Contents

Table of Contents.....	2
Preparing the installation.....	2
Obtaining an installer for Phoenix FD.....	3
Obtaining a hardware lock (dongle) for Phoenix FD.....	3
Installing Phoenix FD.....	3
Installation types.....	3
Running the installation.....	3
Uninstalling Phoenix FD.....	13
Appendices.....	13
Reprogramming a dongle:.....	13
Creating a dongle remote programming context file (.wbc).....	13
Updating the contents of the dongle with a remote programming file (.rtu).....	15
Checking if the dongle has been reprogrammed correctly.....	16

Preparing the installation

Before you install Phoenix FD for 3ds Max, please read the following section.

System requirements

Requirement	Minimum Value	Recommended Value
Processor	An Intel or AMD processor working at minimum 2GHz	An Intel or AMD processor with 64-bit at 2GHz or more
RAM	1 GB	2GB or as much as possible
Operating System	Windows XP SP2 or later	Windows XP Professional 64-bit SP2, Windows 7
3dsMax/3dsMax Design	Autodesk 3ds Max 9/ Autodesk 3ds Max Design 2009	Autodesk 3ds Max 9 or higher/ Autodesk 3ds Max Design 2009 or higher
USB Port	Required for the hardware lock	Required for the hardware lock
TCP/IP	IPv4*	IPv4
V-Ray version**	V-Ray 1.5 SP5	V-Ray 1.5 SP5 or later

* IPv6 is not currently supported. You must have IPv4 set up properly in order to use Phoenix FD

** Phoenix FD can work with both V-Ray or with the standard Scanline rendering engine.

Obtaining an installer for Phoenix FD

You can obtain the latest version of Phoenix FD from the download section on the Chaos Software site at <http://www.chaosgroup.com/> Please use the login name and password supplied to you when you purchased Phoenix FD.

Obtaining a hardware lock (dongle) for Phoenix FD

Phoenix FD uses a hardware lock (dongle) for licensing. This can be purchased along with Phoenix FD from your local reseller.

If you already have a dongle for any of the Chaos Group products, you can upgrade it with additional Phoenix FD licenses – please see the **Reprogramming a dongle** section below. Alternatively, you can keep the Phoenix FD licenses on a separate dongle. For more information, please contact your reseller or Chaos Software at phoenix@chaosgroup.com

Installing Phoenix FD

Installing Phoenix FD requires that you have administrative privileges on your system. If you are running Windows Vista or Windows 7, right-click on the installer and select the **Run as Administrator...** option. For Windows XP, simply double-click the installer to run it.

Installation types


The possible installation types are listed below. The installer will choose one of these types automatically based on the installed software on your system.

- **Workstation** – choose this option to install Phoenix FD on your workstation. It will install the Phoenix FD plug-in for 3ds Max, and the Phoenix FD license server.
- **Render slave** – choose this option to install only the Phoenix FD plug-in
- **License server** - choose this option to install only the Phoenix FD license server. Note that the Phoenix FD license server is essentially the same as the V-Ray license server. You do not need to install both servers on a given machine, if one of them is already installed there.

Running the installation

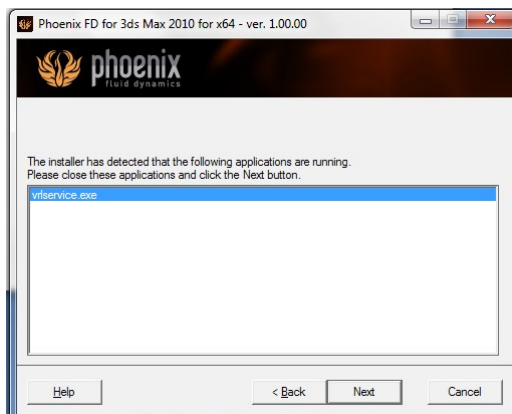
Follow these steps to install Phoenix FD.

- If you are installing the Phoenix FD version that works with V-Ray make sure that you have the appropriate version of V-Ray for 3ds Max installed and set up correctly. For more information contact us at phoenix@chaosgroup.com

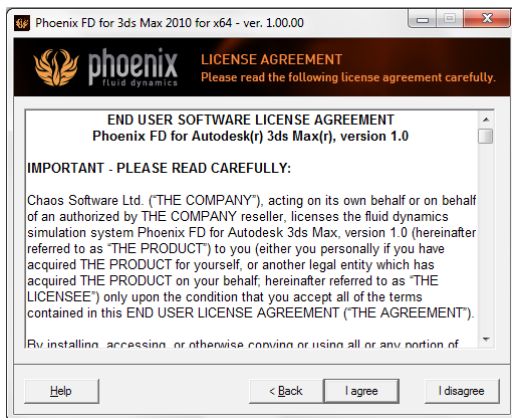
- Run the Phoenix FD installer. On Windows Vista and later, you must right-click the installer and select the **Run as Administrator...** option if UAC (User Access Control) is enabled.
-  If the installation file is not downloaded properly, it may crash when you attempt to run it. If this happens, please re-download the installation. In certain situations you may also get a crash if you run the installation from a network share. In this case, copy the installation to the local machine and then run it from there.
- The welcome dialog of the installer will appear. Click **Next** to continue the installation.



- If there are any applications running that would prevent the installer from copying the required files, it will put up a list with these applications. Close them, and click the **Next** button to continue.



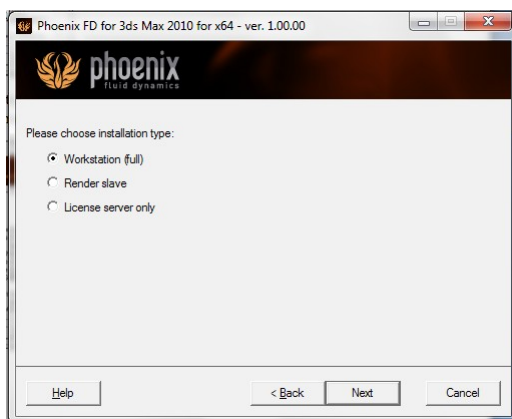
- The Phoenix FD licensing agreement will be displayed in the next dialog. Please take a moment to read it carefully. If you agree with the terms of the agreement, click on the **I agree** button.



- The next screen will present you with the License Server agreement. If you agree with the terms of the agreement, click on the **I agree** button.

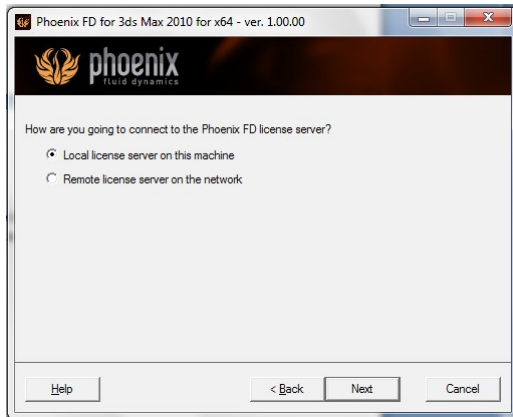


- The following dialog allows you to select the installation type. See the **Installation types** section above for an explanation of the possible options.

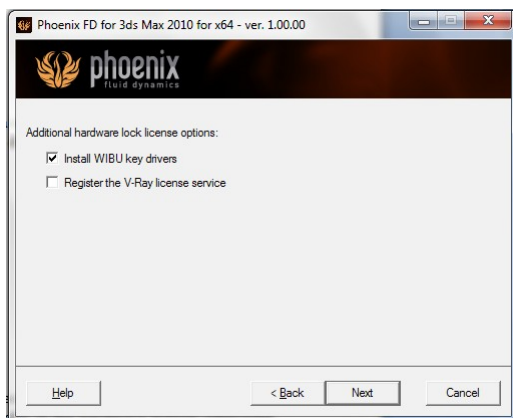


- The next screen allows you to choose whether you will be running the Phoenix FD license server on the same machine, or on a different machine in the network. Note that the Phoenix FD license server is essentially the same as the V-Ray

license server. On a given machine, it is sufficient to have only one of these installed.



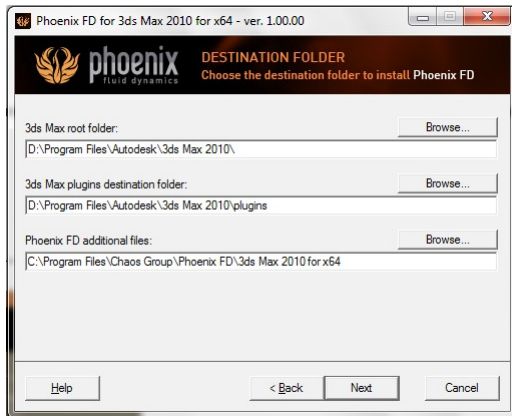
- If you opted to install the Phoenix FD license server locally on the same machine, the next screen presents additional options specific to the hardware license; otherwise, you will skip these steps and after the installation is complete, you will get a dialog for setting up the remote license server settings.



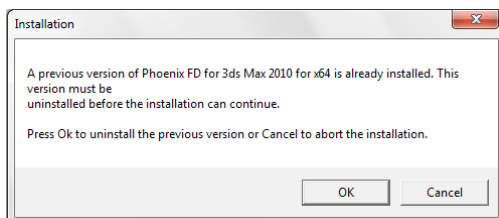
The first option is to install the hardware lock drivers. If you intend to use the dongle on this workstation, then this option must be **ON** in order for the dongle to work properly. If you already have the WIBU-KEY drivers installed (for example, as part of the V-Ray installation), then you can disable this option.

The second option allows you to register the Phoenix FD license service so that it will start automatically when Windows boots up. The Phoenix license service must be running whenever you want to use the dongle on a given workstation (it reads the information from the dongle and communicates with Phoenix FD plug-in). If you intend to use the dongle on this machine, then it is recommended to turn this option **ON**. Note that the Phoenix FD license server is essentially the same as the V-Ray license server. If you already have the V-Ray license server registered to run as a Windows service, then it is not necessary to turn on this option.

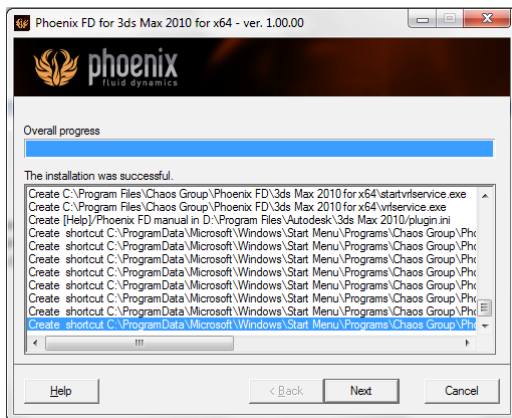
- The next screen requires you to enter the folders into which the various Phoenix FD components will be copied. The installer will fill in the fields with default suitable values, if possible. You can change any of these paths as you wish, although the defaults should work in most cases; This screen is your last chance to cancel the installation or to modify any installation options before any changes have been made to your system. If you wish to change any of the settings you have selected, click the Back button. To continue with the actual installation, click **Next**. Click **Cancel** to exit the installer without any changes to your system.



- If there was a different version of Phoenix FD installed, you will receive a dialog box prompting to uninstall the current version; If you wish to keep the current version (for example, if you just wish to install into a different folder), click **OK** in this dialog box, and **Cancel** the uninstaller dialog that follows. Otherwise, click **OK** and proceed with the uninstaller.

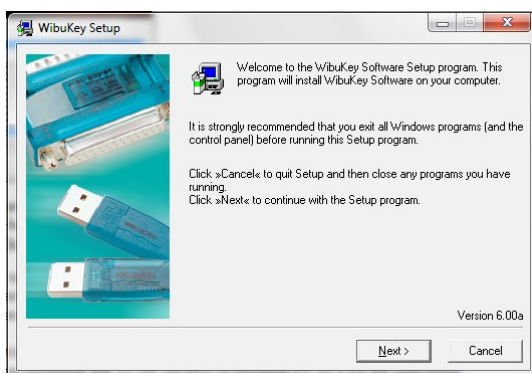


- The installer proceeds to copy the Phoenix FD files to your system and prints out the progress of the installation. If you wish, you may examine the installation log to see what actions have been carried out. Click **Next** to go to the final screen of the installer.

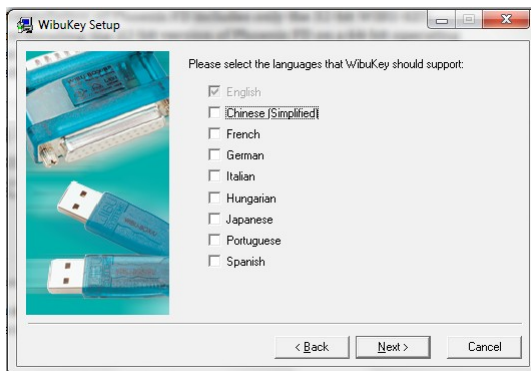


- If you wish to view the change log and readme files for this version of Phoenix FD, leave the check-boxes selected. If you do not wish to view the files, clear the checkbox(es). Click **Finish** to exit the installer.
- If you chose the option to install the dongle drivers, you will get the initial screen of the dongle drivers installer; Click the **Next** button to proceed with the installation of the dongle drivers.

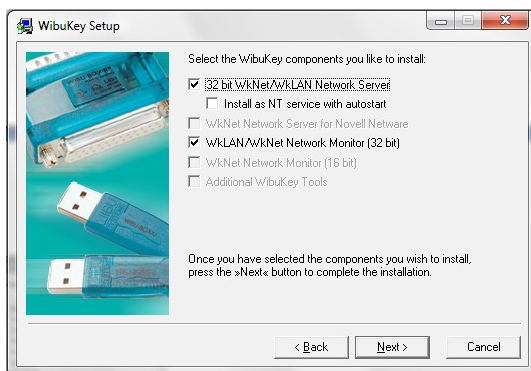
Note: The 32-bit installation of Phoenix FD includes only the 32-bit WIBU-KEY drivers. If you are installing the 32-bit version of Phoenix FD on a 64-bit operating system, you must download and install the dongle drivers separately from the WIBU-KEY website at http://wibu.com/download_user.php



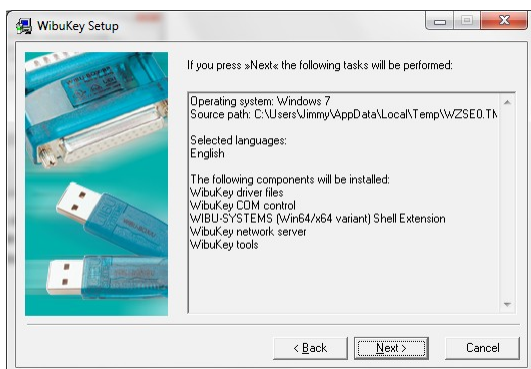
- The next screen allows you to choose language support for the dongle drivers; click **Next** to go to the next screen:



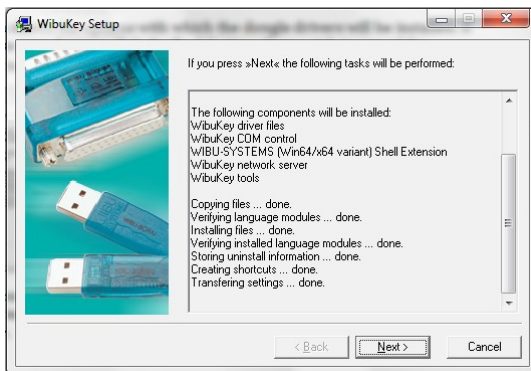
- The next screen allows you to choose some components for the drivers; leave the settings at their default and click the **Next** button.



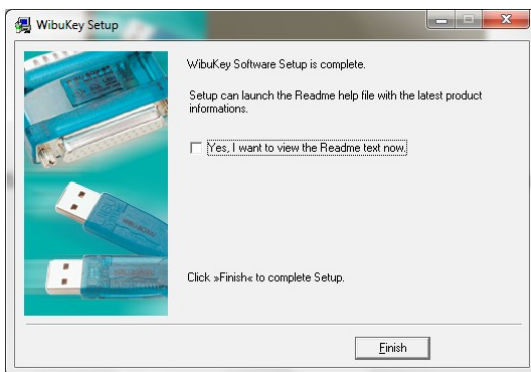
- The next screen shows the options with which the dongle drivers will be installed. If you wish to make any changes, click the **Back** button; if you wish to cancel the dongle drivers installation, click the **Cancel** button. To proceed, click **Next**.



- The WIBU key installer proceeds to copy the necessary files to your system. After the files are copied, click the **Next** button to go to the final screen of the dongle drivers installer.



- You should get the final screen of the dongle drivers installer. Click **Finish** to exit.



- If the installation is successful, you will get a confirmation message box; Click **OK** to close it.
- Now that the dongle drivers are installed, plug the dongle into a free USB port on your machine:

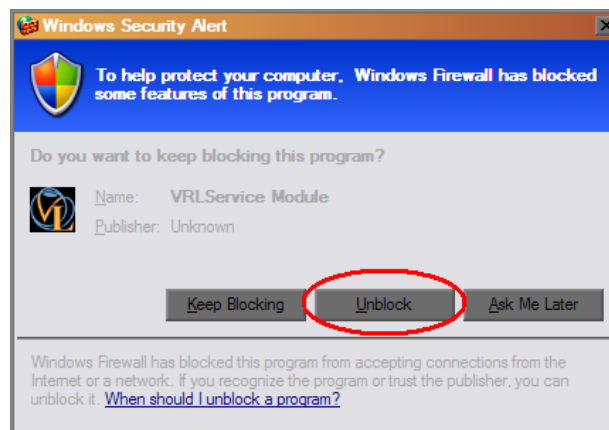


Note: if you have more than dongle, you can plug them all into the same machine. The number of available licenses will be added from all dongles.

- Start the Phoenix FD license server from the Start menu > Programs > Chaos Group > Phoenix FD adv for 3dsmax > Licensing > Launch Phoenix FD license server):

Note: The Phoenix license server is interchangeable with the V-Ray license server. This means that both license servers can distribute all Chaos Software product's licenses .

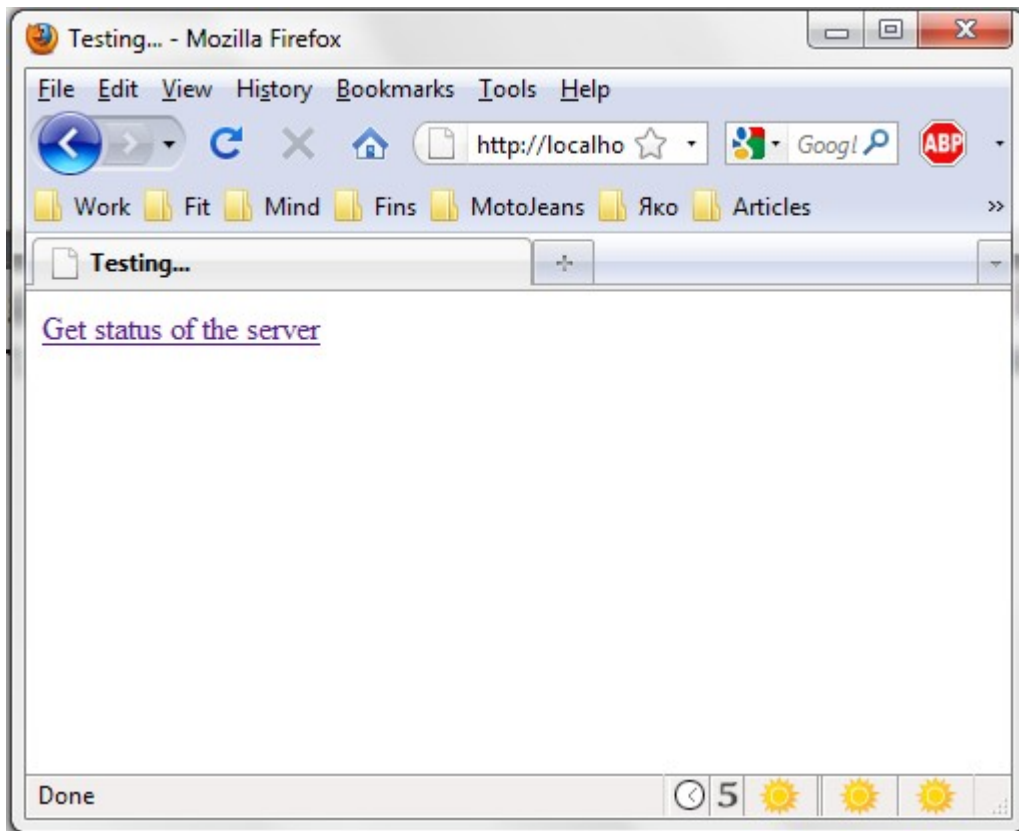
- If you are running Windows XP with Service Pack 2 and Windows Firewall enabled, you may get a message like the one below; select the Unblock option to allow other computers to connect to the Phoenix FD license service - this will be required if you are running Phoenix FD on one machine and the license server on another.



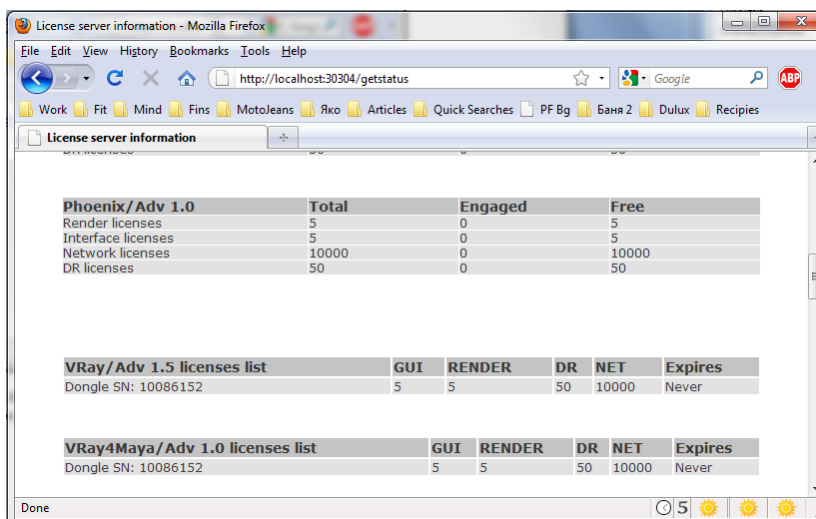
- If the dongle is correctly recognized, you will get the Phoenix FD license service icon in the Task Bar:



- The Phoenix FD license service allows you to check its status from anywhere in the network using a regular web browser. For example, if you want to check the current status of the license service that you just started, open your web browser, and in the address field type `http://localhost:30304` and press Enter. You should get a page like below; choose the Get status of the server option to see more information.



- The Status page shows information about the total number of licenses available to the license server; how many of them are engaged and by which machine in the network etc.



- This concludes the installation of Phoenix FD with hardware lock on your workstation. See the section below for setting up your render slaves.

Uninstalling Phoenix FD

You can uninstall Phoenix FD either from the Control Panel (Control Panel > Add/remove programs), or from the Start menu (Start menu > Programs > Chaos Group > Phoenix FD adv. for 3dsMax Rx > Uninstall Phoenix FD for 3ds Max Rx). This will start the Phoenix FD uninstaller. Follow the on-screen instructions to remove Phoenix FD from your system and restore any files overwritten by the installation.

Appendices

Reprogramming a dongle:

When you purchase Phoenix FD, your dongle will need to be reprogrammed with the corresponding number licenses. Reprogramming the dongle is a two-part process:

A. In the first part, you need to send us a special file, created through the Phoenix FD License Server, which contains information identifying your specific dongle.

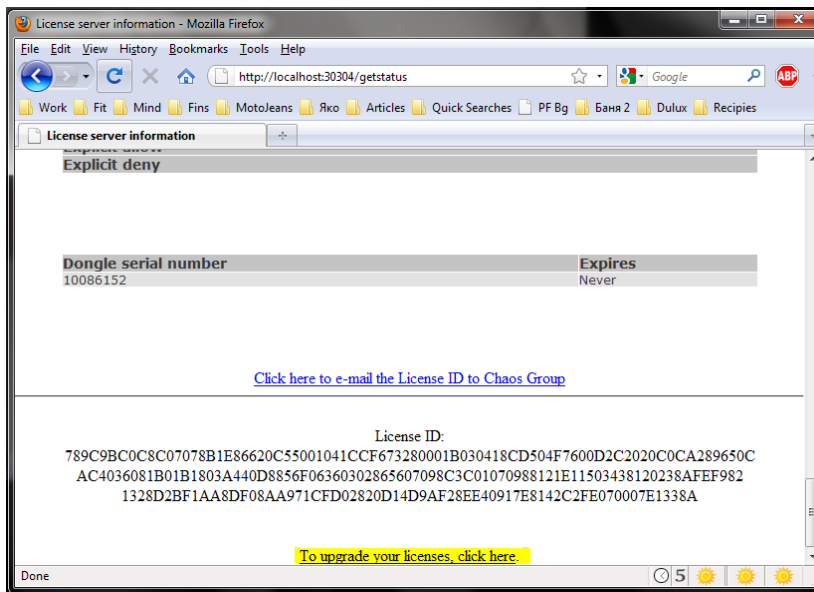
B. Chaos Software will send you another file, which includes the new contents of your dongle. This is transferred onto the dongle by the WIBU-KEY drivers.

After the dongle is reprogrammed, you can check if the new licenses/products have been added successfully. Here are these steps in more details.

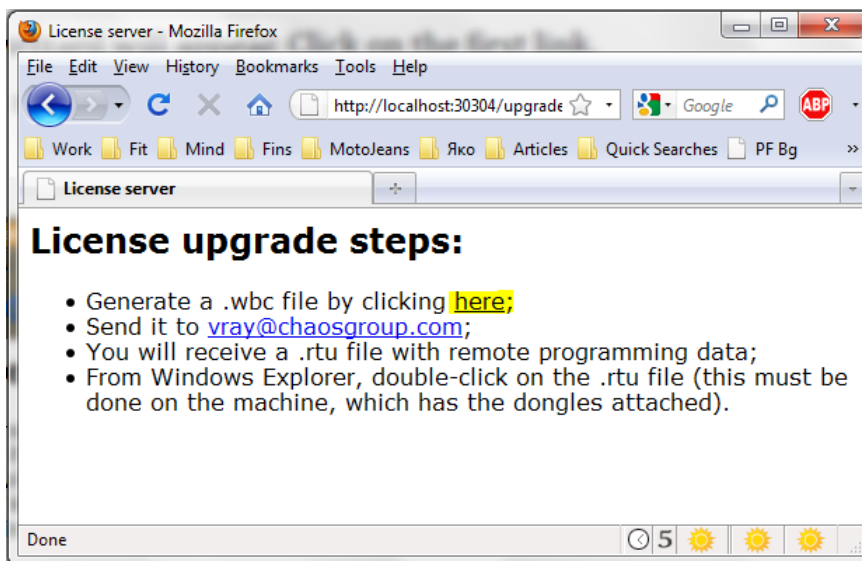
Creating a dongle remote programming context file (.wbc)

In order to reprogram a dongle, you first need to create a file which identifies your specific dongle.:

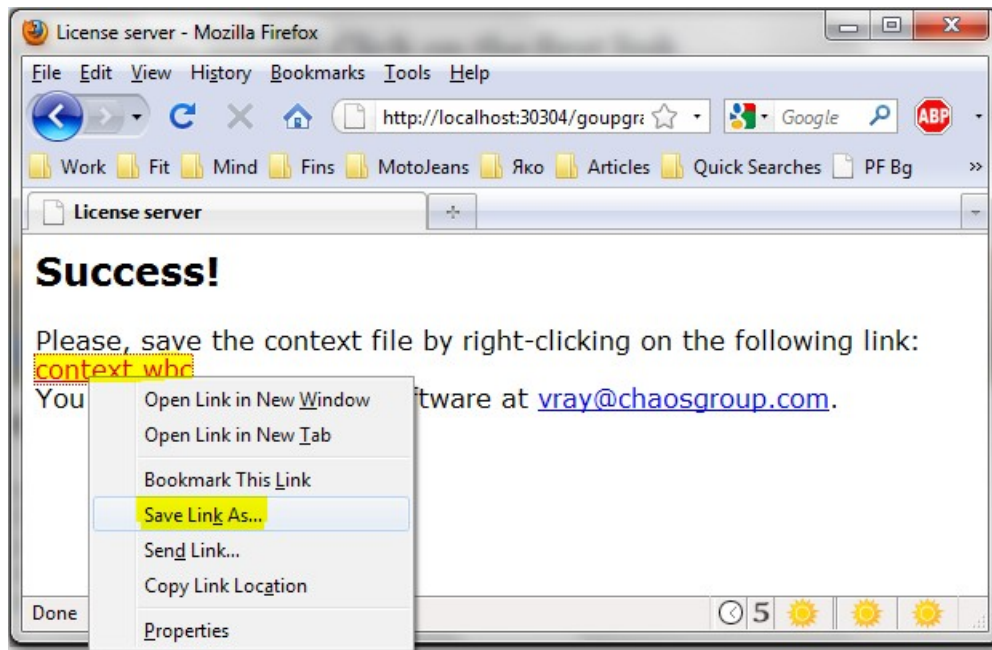
- Open a web browser (you need to have Javascript enabled). In the address field, enter <http://someserver:30304> where "someserver" is the name or IP address of the machine where the Phoenix FD licensing service is running (or localhost if you are on that machine). Click on the [Get status of the server](#) link on the page that loads. On this page, scroll down to the bottom and click on the [To upgrade your licenses click here](#) link.



- A web-based wizard will appear. Click on the first link.



- Wait until the remote context file is created on the server (this normally takes 10-20seconds). When the **Success!** page appears, save the remote context file by right-clicking on the link and using Save Link As.../Save Target As...

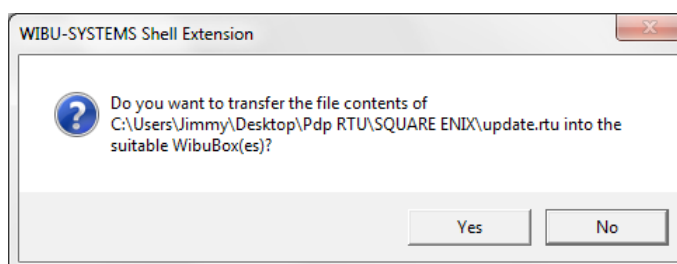


- Email this file to phoenix@chaosgroup.com , along with any other relevant information.

Updating the contents of the dongle with a remote programming file (.rtu)

Once we receive the .wbc file, we will generate another file with extension .rtu that can be used by the dongle drivers to update the contents of the dongle.

- When you receive the .rtu file, save it on the Desktop of the machine where the dongle is plugged.
- Close the Phoenix FD licensing service, if it is running. You can do this either by right-clicking the Phoenix FD license service icon in the Task Bar and selecting Exit, or if it is running as a service - from the Control panel > Administrative tools > Services applet.
- Double-click the saved .rtu file. The dongle software will ask you whether you really want to transfer the file to the dongle. Click Yes to update your dongle.

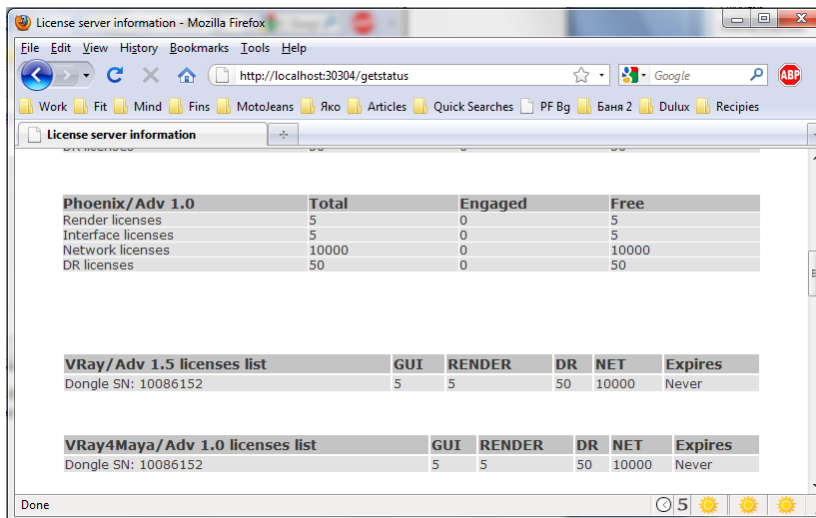


- If the contents of the file is successfully transferred, you will get a confirmation dialog; click OK to close the dialog.
- Start the Phoenix FD license service from the Start menu > Programs > Chaos Group > Phoenix FD adv for 3dsmax > Licensing > Launch Phoenix FD license service):

Checking if the dongle has been reprogrammed correctly

After the dongle is successfully updated, you may wish to check if the number of licenses is correct.

- Make sure the Phoenix FD licensing service is running on the machine where the dongle is plugged in.
- Open a web browser and in the address field, type `http://someserver:30304` where "someserver" is the name or IP address of the machine where the Phoenix FD licensing service is running (or localhost if you are on that machine). Click the [Get status of the server](#) link on the page that loads. This will show a web-page with information about the licenses currently available to the Phoenix FD licensing service. The total number of licenses is listed at that page:



The screenshot shows a web browser window with the address `http://localhost:30304/getstatus`. The page content includes the following tables:

Phoenix/Adv 1.0	Total	Engaged	Free
Render licenses	5	0	5
Interface licenses	5	0	5
Network licenses	10000	0	10000
DR licenses	50	0	50

VRay/Adv 1.5 licenses list	GUI	RENDER	DR	NET	Expires
Dongle SN: 10086152	5	5	50	10000	Never

VRay4Maya/Adv 1.0 licenses list	GUI	RENDER	DR	NET	Expires
Dongle SN: 10086152	5	5	50	10000	Never

- Check if the numbers match the required number of licenses.